

Residential treatment for adults with severe substance use disorder - what works, for whom and in what circumstances? An initial theory.

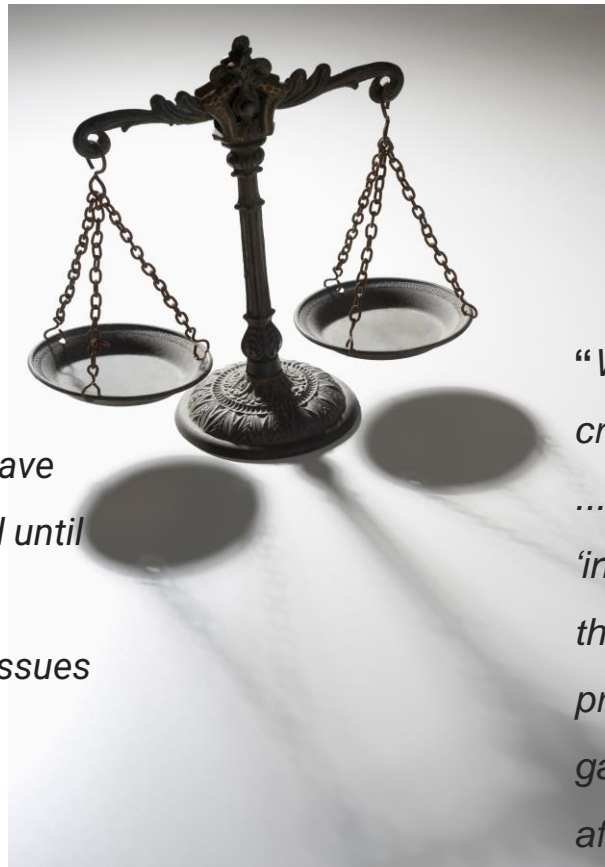
SSA PhD Conference

Henry De Salis

3 November 2021

Judgement A

“You suffer from addiction and have endured poverty and trauma, and until this year had never received rehabilitation for your addiction issues or counselling to address your background.”



Judgement B

“When someone like [this] is a critical component to the programme ... How do I put aside that ‘institutional knowledge’ and come to the conclusion that [he], as a president in the Mongrel Mob [a gang], is able to rehabilitate those afflicted with methamphetamine addiction?”

Realist Evaluation

Pawson & Tilley (1997)

What works?

For Whom?

Over what timescale?

In what
circumstances?



Scope

Ontology

Setting

Initial Programme Theory

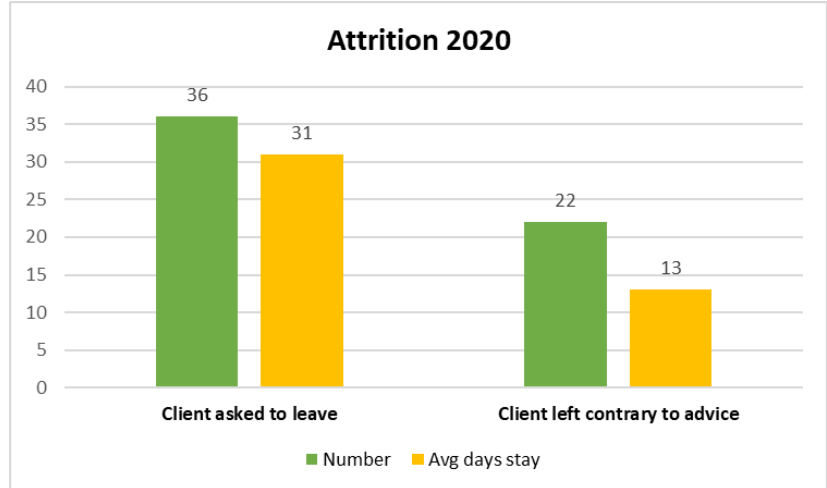
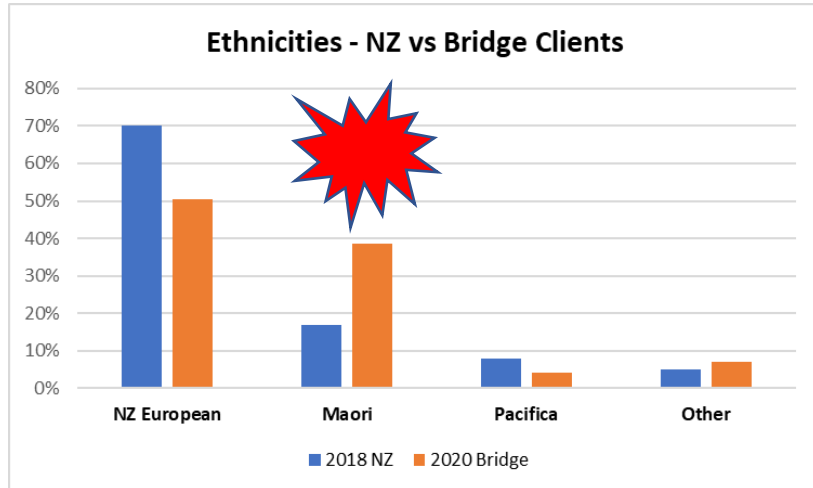
Compare and Contrast

Ontology and causation

Term	Description	Explanation
Realist ontology	What exists	Explains that reality exists in layers (Empirical, Actual and the Real) only some of which is observable. Reality also exists at the levels of micro (individual), meso (organisational) and macro (societal).
Causation	$O=f(C.M)$	Outcomes follow from the effect of Contexts on Mechanisms
Contexts	Conditions that activate the mechanisms, leading to positive or negative outcomes.	Phenomena connected in space and time. Can be structural (network or organisational), cultural, resource-based (skills, knowledge), motivational.
Mechanisms	The underlying latent process / structure that generates outcomes.	Mechanisms are hidden and sensitive to changes in context. Interventions are not mechanisms.

Setting

- 26-bed residential treatment programme for
 - Adults
 - Moderate to severe substance use disorder
- Operated by the Salvation Army
- Wellington, Aotearoa New Zealand
- Staff – clinicians, caseworkers, recovery coaches
- Data collection – funding agreements; 5 x interviews (n=4)



Initial Programme Theory

Outcome=f(C.M)

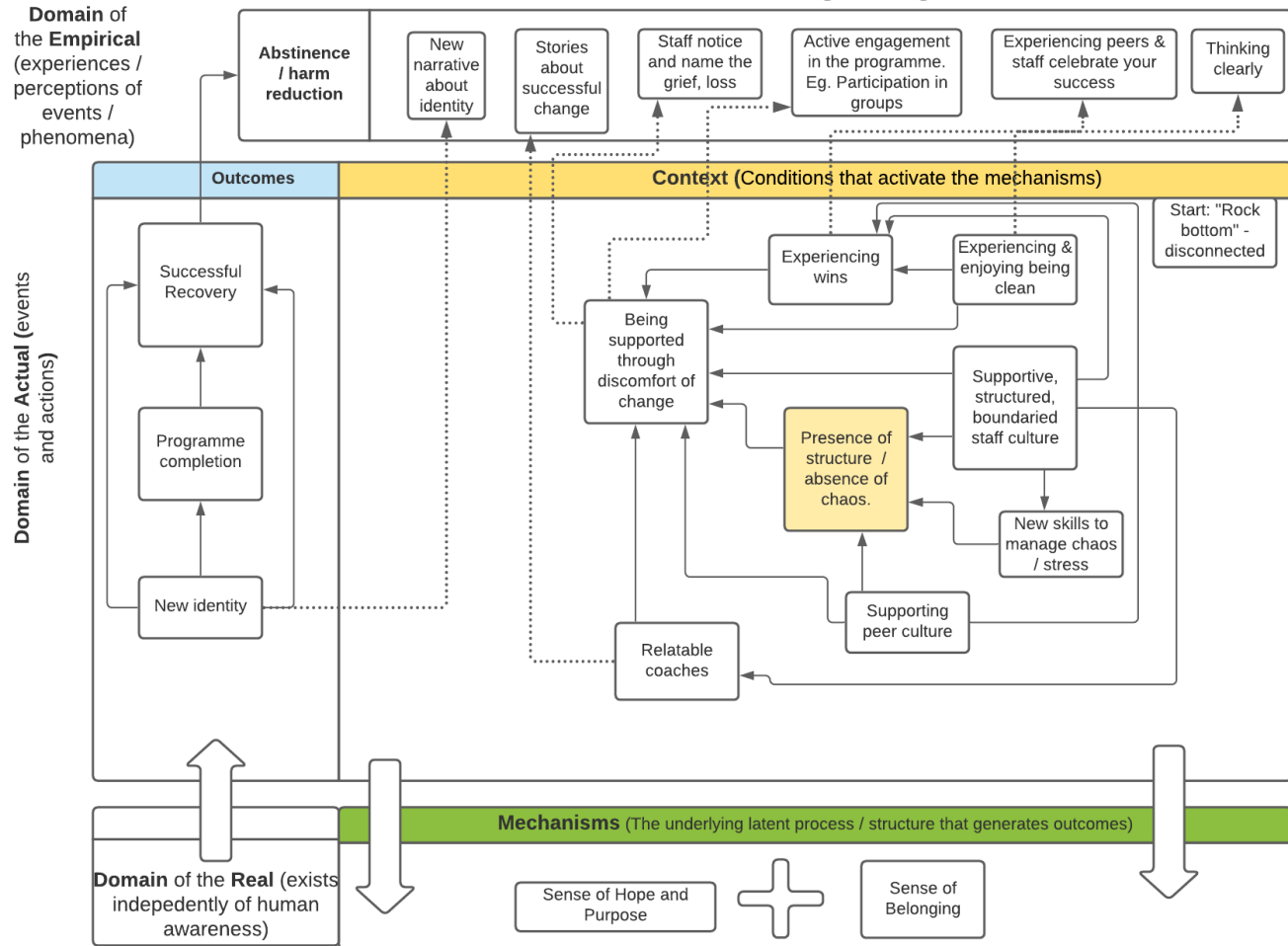
Outcome = Programme completion.

Intermediate Outcome = Change of Identity.

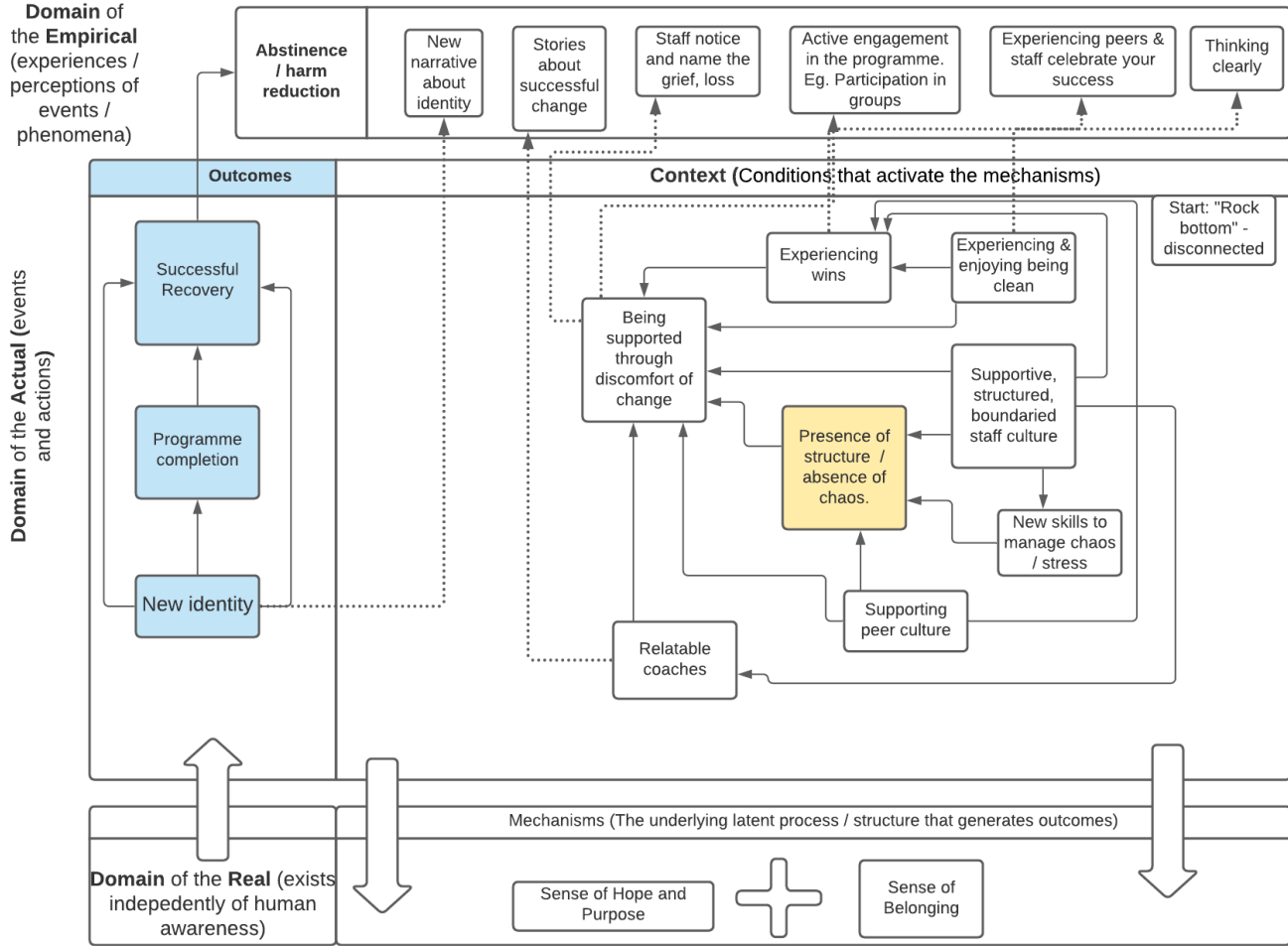
Context = (Presence of structure + support)+(absence of chaos).

Mechanism = (Sense of belonging + sense of hope and purpose.

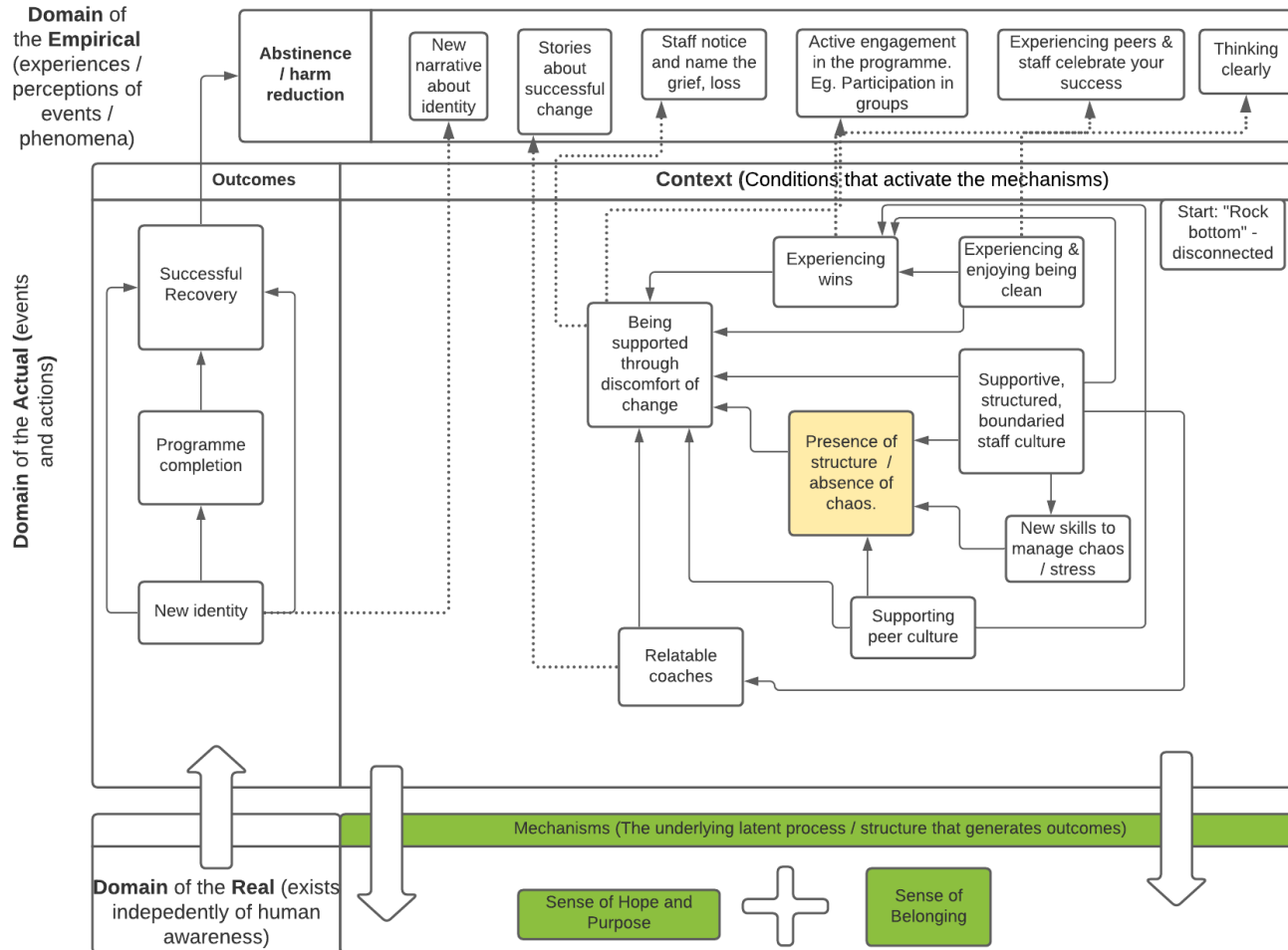
Residential rehabilitation for addictions: successful change through a realist lens v2



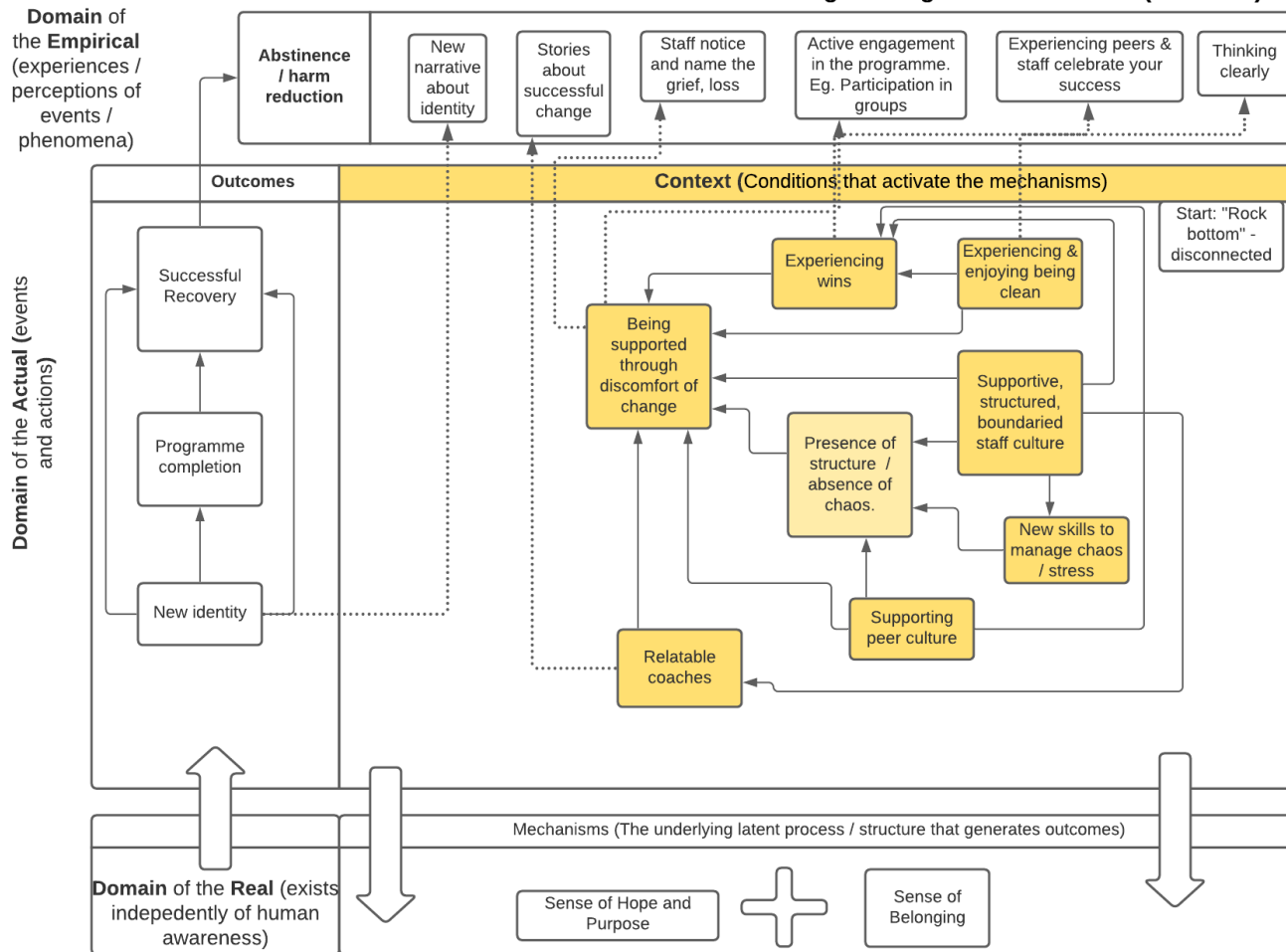
Residential rehabilitation for addictions: successful change through a realist lens v2 (Outcomes)



Residential rehabilitation for addictions: successful change through a realist lens v2 (Mechanisms)



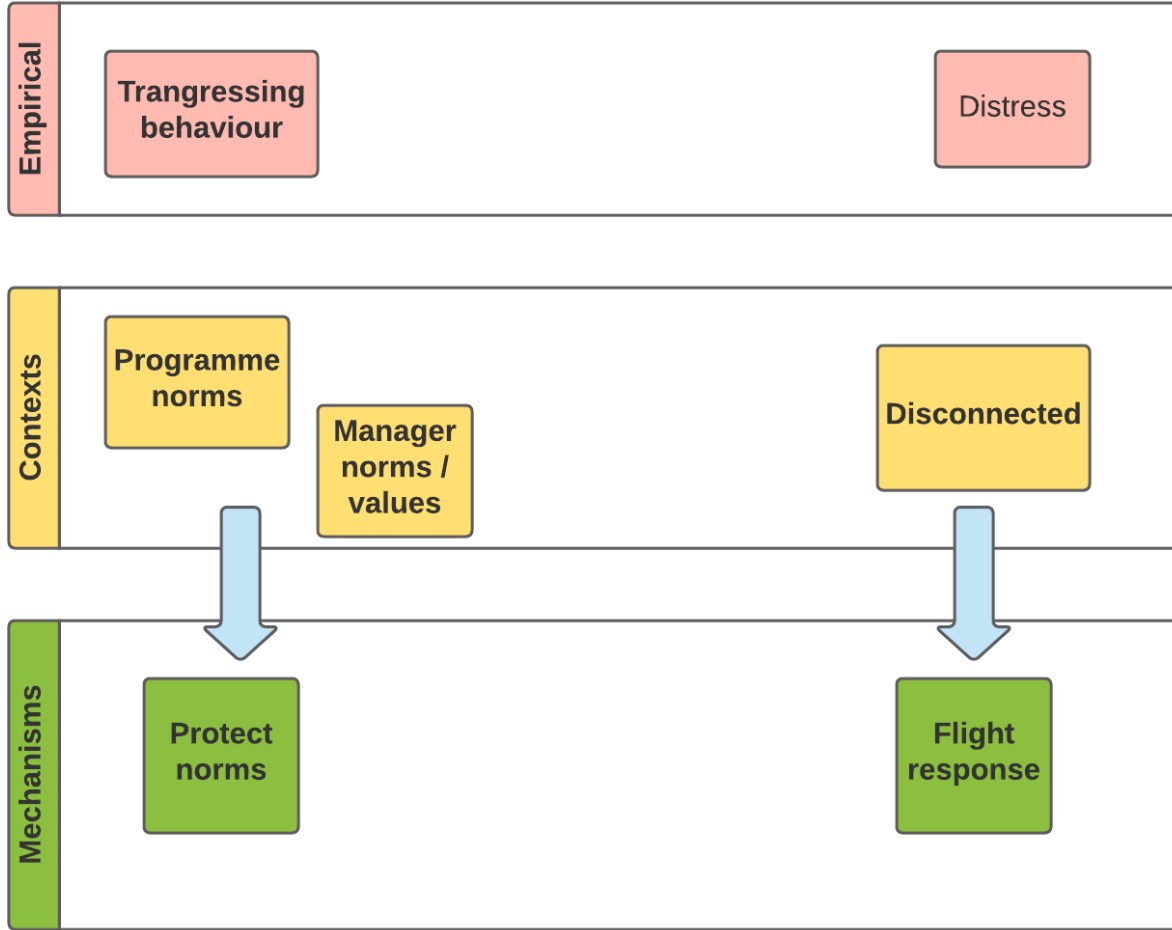
Residential rehabilitation for addictions: successful change through a realist lens v2 (Contexts)



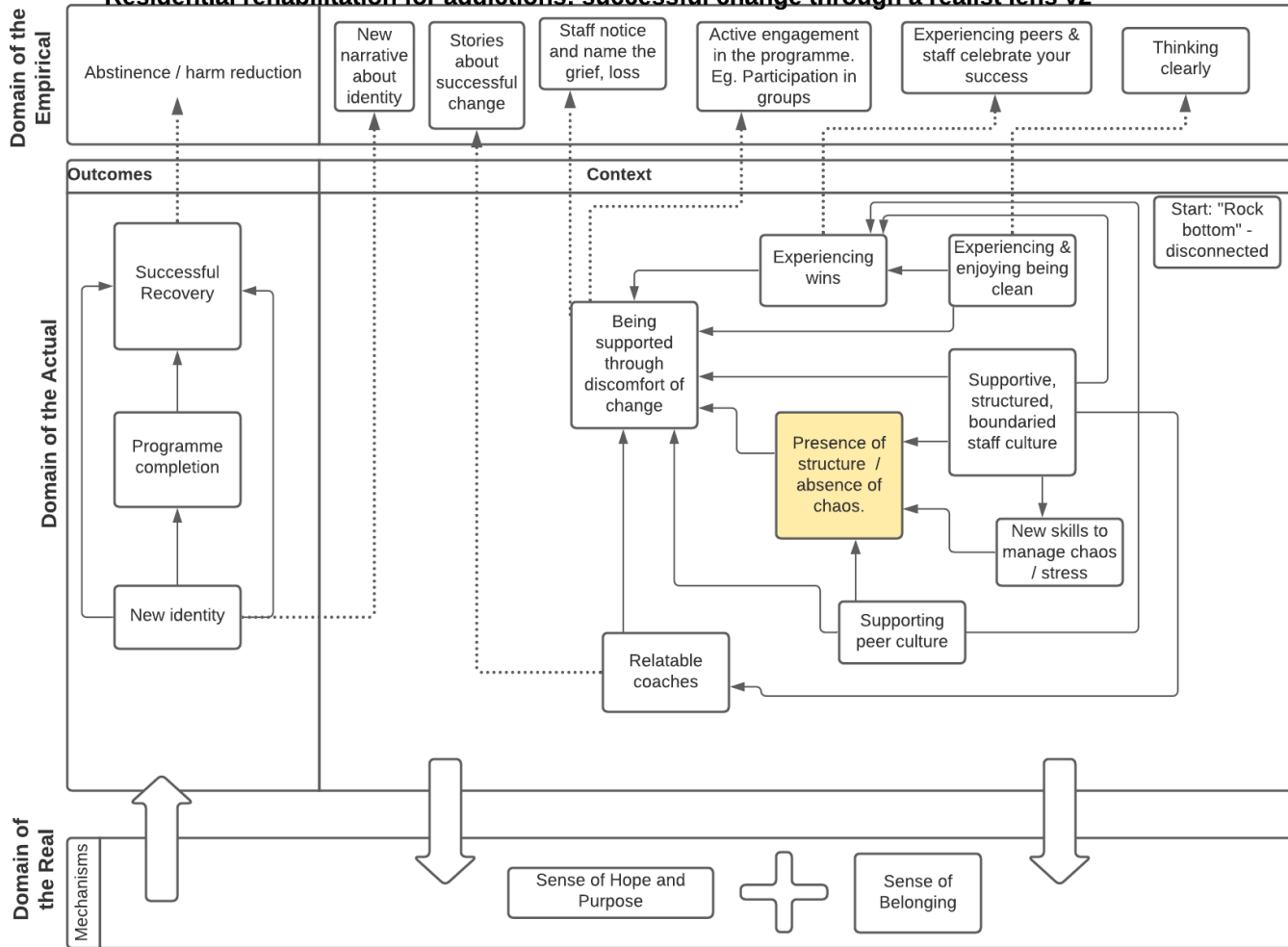
Early Exits

Exited by staff

Against staff advice



Residential rehabilitation for addictions: successful change through a realist lens v2





Compare and Contrast

Potential Theories

	Initial Programme Theory	Candidate Theories	Factors of Effective Treatment (Moos, 2007)
Mechanisms of change	Sense of Hope & Purpose	Hope Theory (Snyder, 2002) Spiritual Transformation Process (Neff & McMaster, 2005)	
	Sense of Belonging	Social Identity Theory (Tajfel, 1974)	
Contexts	Presence of structure & support		Support, structure & goal direction <input checked="" type="checkbox"/>
	Absence of chaos		Rewards for abstinence <input checked="" type="checkbox"/> Building self-efficacy & coping <input checked="" type="checkbox"/>

Conclusion

Strengths

- Causal model
- Separates Contexts and Mechanisms
- Explains positive and negative outcomes

Limitations

- Interview population
- Indigenous clients?
- Treatment length?
- Non-completers & successful recovery?

References:

1. Moos RH. Theory-based active ingredients of effective treatments for substance use disorders. *Drug Alcohol Depend* [Internet]. 2007;88(2):109–21. Available from: <https://www.sciencedirect.com/science/article/pii/S0376871606004091>.
2. Neff JA, MacMaster SA. Applying Behavior Change Models to Understand Spiritual Mechanisms Underlying Change in Substance Abuse Treatment. *Am J Drug Alcohol Abuse* [Internet]. 2005 Jan 1;31(4):669–84. Available from: <https://doi.org/10.1081/ADA-200068459>.
3. Paul GL. Behavior Modification Research: Design and Tactics. In: Franks CM, editor. *Behavior Therapy: Appraisal and Status*. 1st ed. New York: McGraw-Hill Book Company; 1969.
4. Pawson R, Tilley N. *Realistic Evaluation*. First. London, UK: SAGE Publications Ltd; 1997.
5. Snyder CR, Rand KL, Sigmon DR. Hope Theory: A Member of the Positive Psychology Family. In: Gallagher MW, Lopez SJ, editors. *The Oxford Handbook of Hope*. New York: Oxford University Press; 2018.
6. Tajfel H. Social identity and intergroup behaviour. *Soc Sci Inf* [Internet]. 1974 Apr 1;13(2):65–93. Available from: <https://doi.org/10.1177/053901847401300204>.

Acknowledgements:

Salvation Army New Zealand, Fiji, Tonga and Samoa Territory

Dr Elliot Bell

Assoc Prof Giles Newton-Howes

Dr Rachelle Martin

Contact details:

Henry De Salis

Henry.desalis@postgrad.otago.ac.nz